

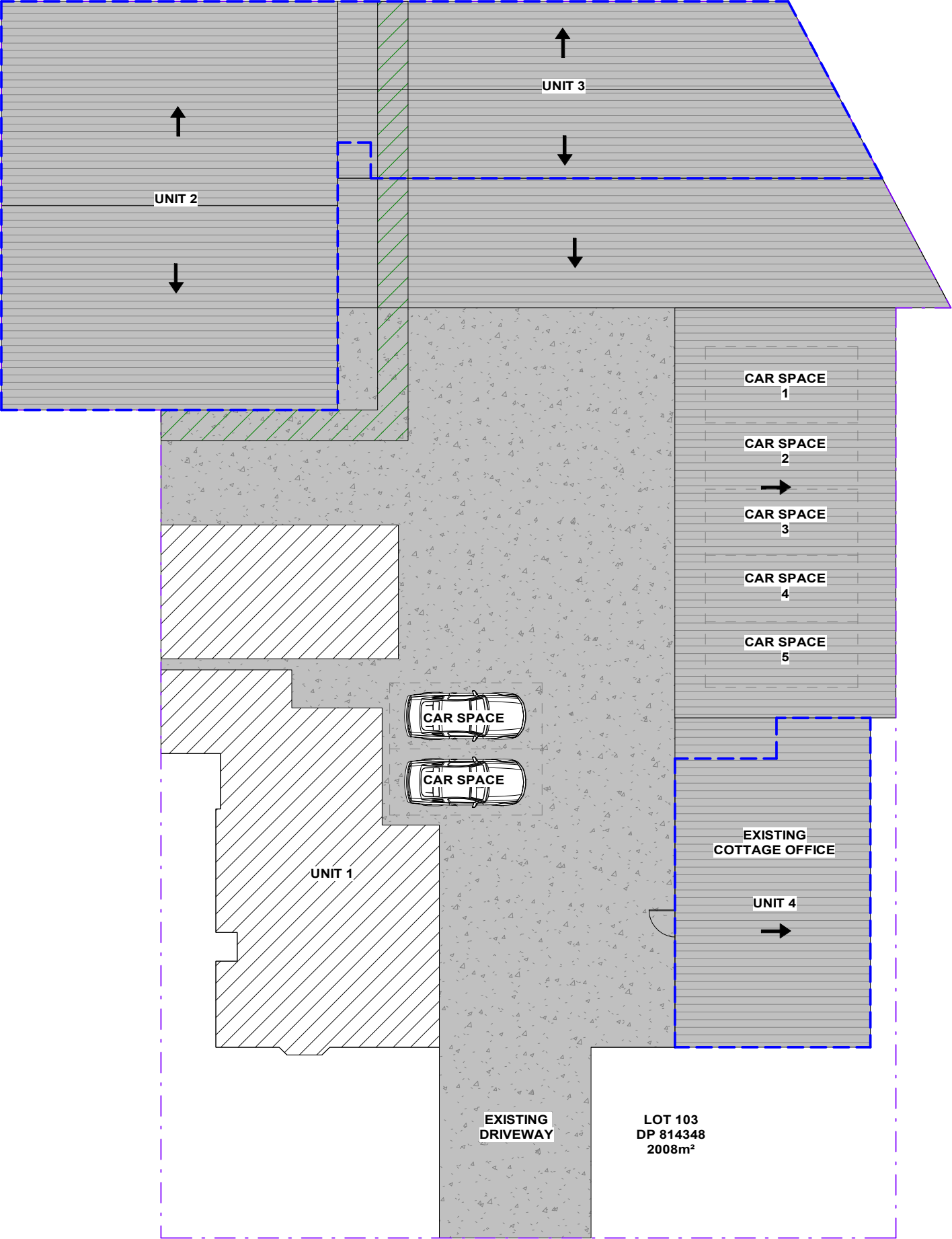
PROPOSED S4.55 TO EXISTING APPROVED (DA-269/2015)  
AT UNIT 4 106-110 BENAROON ROAD, LAKEMBA

Sheet List	
Sheet Number	Sheet Name
A00	COVER SHEET
A01.01	EXISTING SITE PLAN & ROOF PLAN, SITE ANALYSIS PLAN
A01.02	PROPOSED SITE PLAN & ROOF PLAN, SITE ANALYSIS PLAN
A02	EXISTING GROUND FLOOR - UNIT 4
A03	EXISTING FACTORY GROUND FLOOR PLAN - UNIT 3 & 4
A04	EXISTING FACTORY MEZZANINE FLOOR PLAN - UNIT 2 & 3
A05	PROPOSED SITE FLOOR PLAN
A06	TECHNICAL SPECIFICATION PLAN
A07	TECHNICAL SPECIFICATION PLAN



ISSUED FOR S4.55

				<p><b>COPYRIGHT</b> All rights reserved. These drawings, plans and specifications and the copyright are the property of Nemco Design and must not be used, reproduced or copied wholly or in part without the written permission of Nemco Design.</p> <p><b>NEMCO DESIGN</b> PTY LTD</p> <p>ADDRESS: SUITE 4, LEVEL 1, 402-410 CHAPEL RD, BANKSTOWN, NSW 2200 P: 9709 5556    M: 0422 606 228 E: abraham@nemcodesign.com.au</p> <p><b>STRUCTURAL ENGINEERING &amp; ARCHITECTURAL DESIGN</b></p>	<p><b>PROPOSED S4.55 TO EXISTING APPROVED (DA-269/2015)</b>  <b>Unit 4 106-110 BENAROON RD, LAKEMBA LOT 103, DP 814348</b></p> <p><b>COVER SHEET</b></p>	JOB NUMBER: <b>22796</b>	DWG NUMBER: <b>A00</b>	ORIGINAL SIZE: A3		
						DESIGNED BY: A.N.	DATE: <b>01.12.2022</b>			
						DRAWN BY: A.N.	SCALE: AS SHOWN			
REV	DATE	DESCRIPTION	BY							



1 SITE PLAN, ROOF PLAN & SITE ANALYSIS PLAN

1 : 200

LEGEND:

- SITE BOUNDARY
- EXISTING GROUND FLOOR OUTLINE
- PROPOSED GROUND FLOOR OUTLINE
- PROPOSED FIRST FLOOR OUTLINE
- EXISTING SETBACK
- PROPOSED SETBACK
- EXISTING EASEMENT 1.2M WIDE

BENAROON ROAD

ISSUED FOR S4.55

REV	DATE	DESCRIPTION	BY
A	01.06.2022	ISSUED FOR S4.55	MT

**COPYRIGHT**  
All rights reserved.  
These drawings, plans and specifications  
and the copyright are the property of  
Nemco Design and must not be used,  
reproduced or copied wholly or in part  
without the written permission of Nemco  
Design.



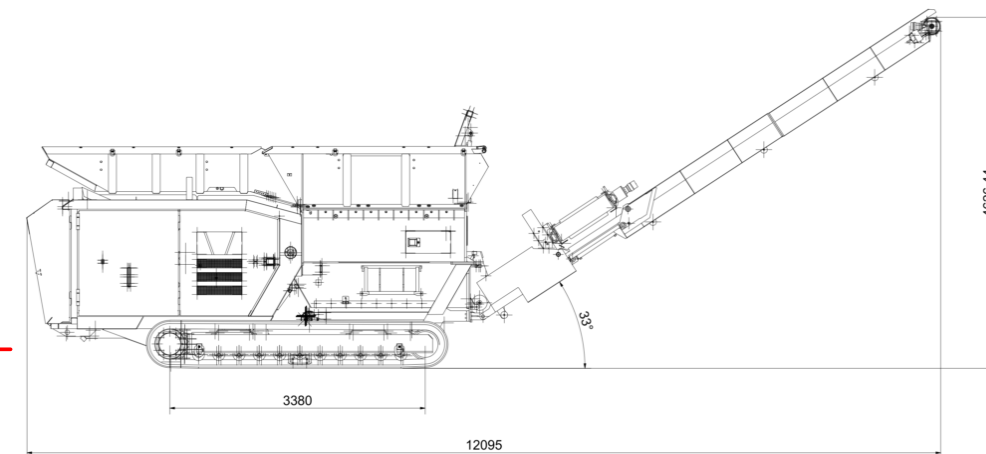
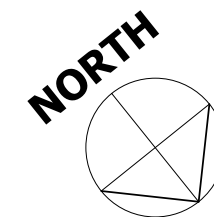
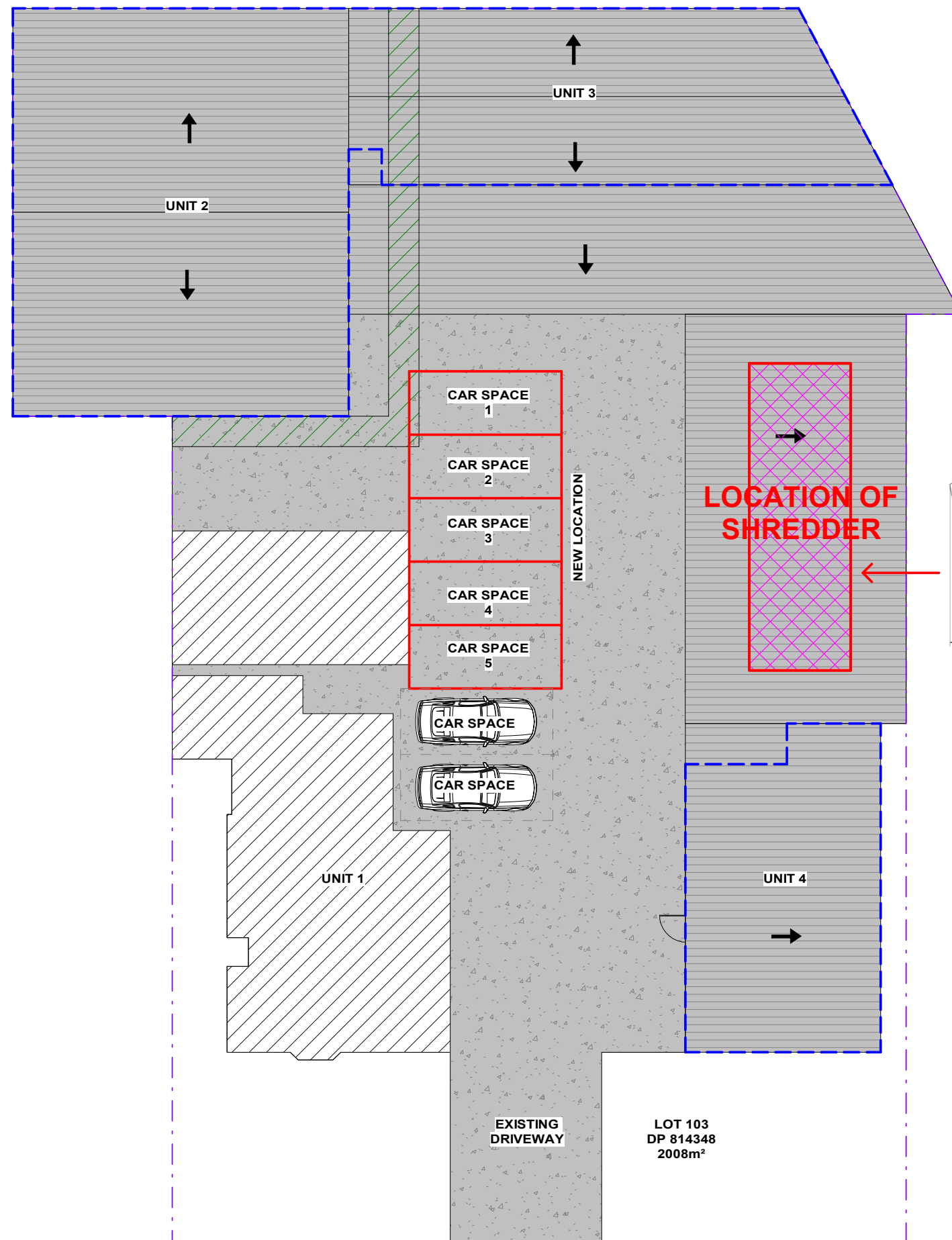
STRUCTURAL ENGINEERING  
& ARCHITECTURAL DESIGN

ADDRESS:  
SUITE 4, LEVEL 1,  
402-410 CHAPEL RD, BANKSTOWN,  
NSW 2200  
P: 9709 5556 M: 0422 606 228  
E: abraham@nemcodesign.com.au

**PROPOSED S4.55 TO EXISTING APPROVED  
(DA-269/2015)**  
**Unit 4 106-110 BENAROON RD, LAKEMBA  
LOT 103, DP 814348**

**EXISTING SITE PLAN & ROOF PLAN, SITE ANALYSIS  
PLAN**

JOB NUMBER: <b>22796</b>	DWG NUMBER: <b>A01.01</b>	ORIGINAL SIZE: A3
DESIGNED BY: A.N.	DATE: <b>01.12.2022</b>	
DRAWN BY: A.N.	SCALE: AS SHOWN	



**PROPOSED HAMMEL PRIMARY  
SHREDDER VB 750  
FOR SHREDDING MATTRESSES**

**DETAIL @1:100 SCALE**

**LEGEND:**

- SITE BOUNDARY
- EXISTING GROUND FLOOR OUTLINE
- PROPOSED GROUND FLOOR OUTLINE
- PROPOSED FIRST FLOOR OUTLINE
- EXISTING SETBACK
- PROPOSED SETBACK
- EXISTING EASEMENT 1.2M WIDE

1 PROPOSED SITE PLAN & ROOF PLAN, SITE ANALYSIS PLAN  
1 : 200

**BENAROON ROAD**

**ISSUED FOR S4.55**

REV	DATE	DESCRIPTION	BY
A	01.06.2022	ISSUED FOR S4.55	MT

**COPYRIGHT**  
All rights reserved.  
These drawings, plans and specifications  
and the copyright are the property of  
Nemco Design and must not be used,  
reproduced or copied wholly or in part  
without the written permission of Nemco  
Design.

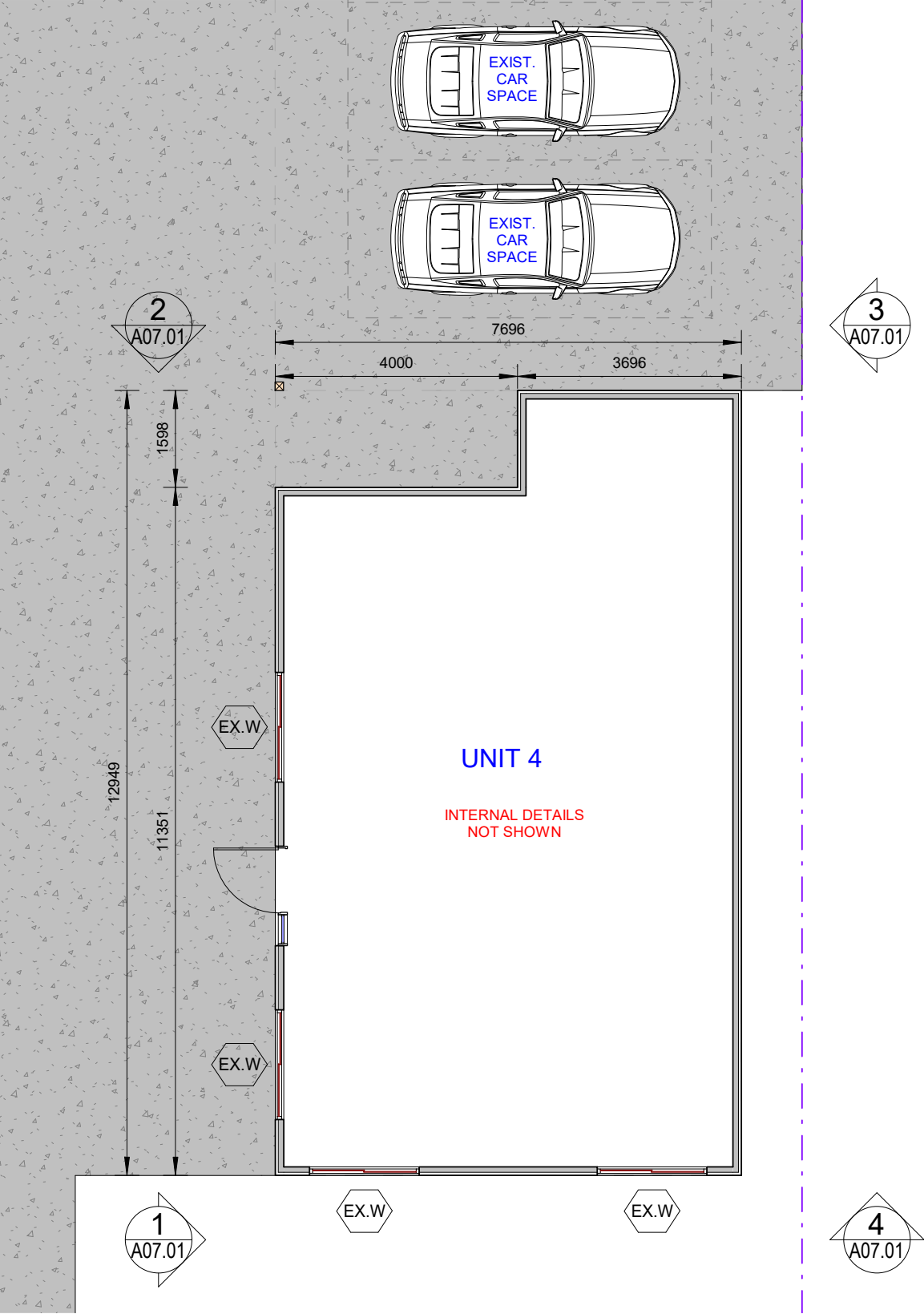
**NEMCO DESIGN**  
PTY LTD  
STRUCTURAL ENGINEERING  
& ARCHITECTURAL DESIGN

ADDRESS:  
SUITE 4, LEVEL 1,  
402-410 CHAPEL RD, BANKSTOWN,  
NSW 2200  
P: 9709 5556 M: 0422 606 228  
E: abraham@nemcodesign.com.au

**PROPOSED S4.55 TO EXISTING APPROVED  
(DA-269/2015)**  
**Unit 4 106-110 BENAROON RD, LAKEMBA  
LOT 103, DP 814348**  
**PROPOSED SITE PLAN & ROOF PLAN, SITE ANALYSIS  
PLAN**

JOB NUMBER: <b>22796</b>	DWG NUMBER: <b>A01.02</b>	ORIGINAL SIZE: A3
DESIGNED BY: A.N.	DATE: <b>01.12.2022</b>	
DRAWN BY: A.N.	SCALE: AS SHOWN	

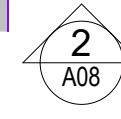
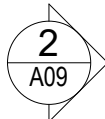
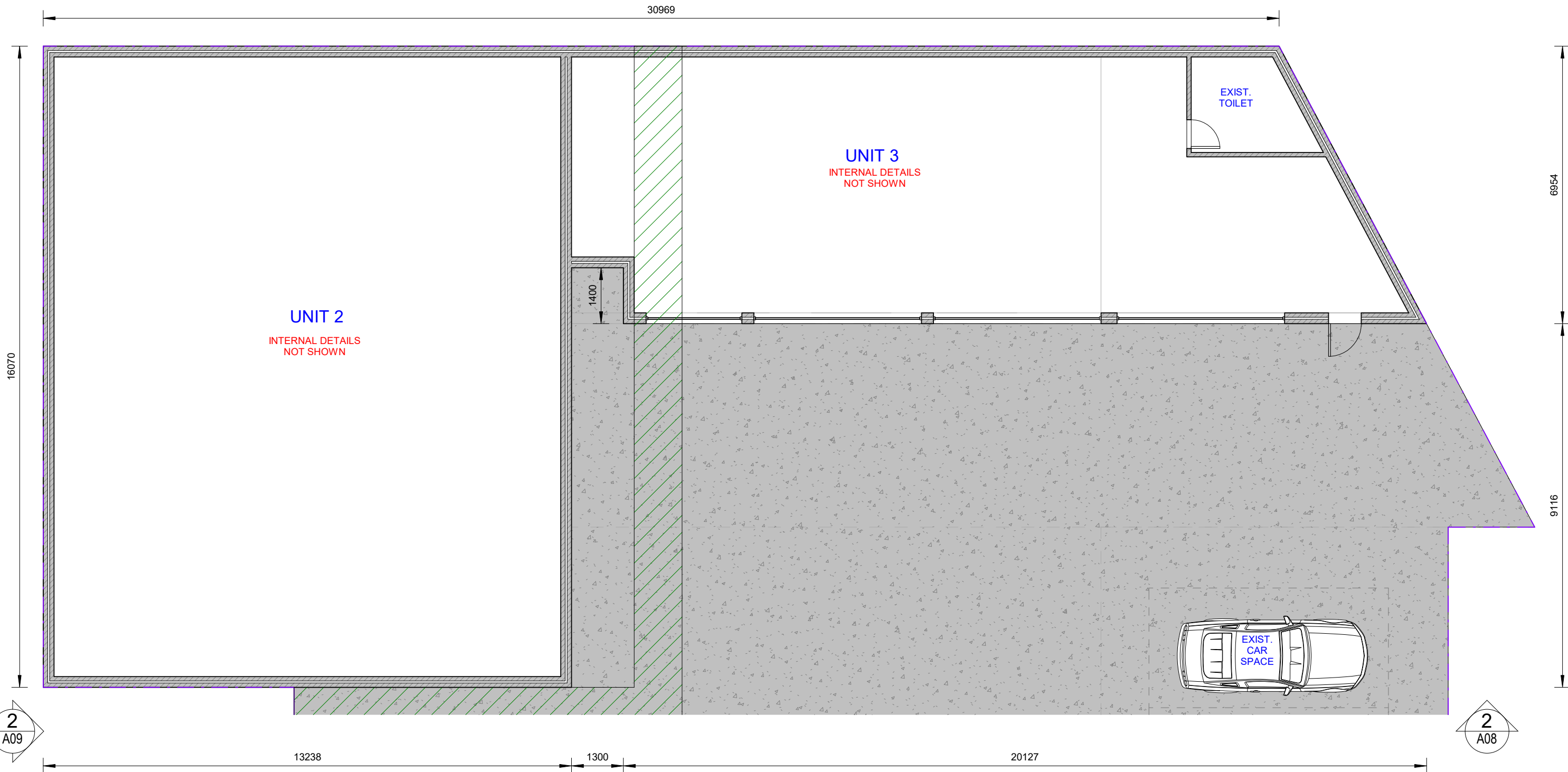
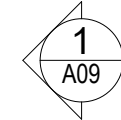
5/12/2022 5:03:03 PM



1 EXISTING GROUND FLOOR PLAN - UNIT 4  
1 : 100

ISSUED FOR S4.55

--	--	--	--	--	--	--	--	--	--	--	--	--	--	--	--	--	--	--	--	--	--	--	--	--	--	--	--	--	--	--	--	--	--	--	--	--	--	--	--	--	--	--	--	--	--	--	--	--	--	--	--	--	--	--	--	--	--	--	--	--	--	--	--	--	--	--	--	--	--	--	--	--	--	--	--	--	--	--	--	--	--	--	--	--	--	--	--	--	--	--	--	--	--	--	--	--	--	--	--	--	--	--	--	--	--	--	--	--	--	--	--	--	--	--	--	--	--	--	--	--	--	--	--	--	--	--	--	--	--	--	--	--	--	--	--	--	--	--	--	--	--	--	--	--	--	--	--	--	--	--	--	--	--	--	--	--	--	--	--	--	--	--	--	--	--	--	--	--	--	--	--	--	--	--	--	--	--	--	--	--	--	--	--	--	--	--	--	--	--	--	--	--	--	--	--	--	--	--	--	--	--	--	--	--	--	--	--	--	--	--	--	--	--	--	--	--	--	--	--	--	--	--	--	--	--	--	--	--	--	--	--	--	--	--	--	--	--	--	--	--	--	--	--	--	--	--	--	--	--	--	--	--	--	--	--	--	--	--	--	--	--	--	--	--	--	--	--	--	--	--	--	--	--	--	--	--	--	--	--	--	--	--	--	--	--	--	--	--	--	--	--	--	--	--	--	--	--	--	--	--	--	--	--	--	--	--	--	--	--	--	--	--	--	--	--	--	--	--	--	--	--	--	--	--	--	--	--	--	--	--	--	--	--	--	--	--	--	--	--	--	--	--	--	--	--	--	--	--	--	--	--	--	--	--	--	--	--	--	--	--	--	--	--	--	--	--	--	--	--	--	--	--	--	--	--	--	--	--	--	--	--	--	--	--	--	--	--	--	--	--	--	--	--	--	--	--	--	--	--	--	--	--	--	--	--	--	--	--	--	--	--	--	--	--	--	--	--	--	--	--	--	--	--	--	--	--	--	--	--	--	--	--	--	--	--	--	--	--	--	--	--	--	--	--	--	--	--	--	--	--	--	--	--	--	--	--	--	--	--	--	--	--	--	--	--	--	--	--	--	--	--	--	--	--	--	--	--	--	--	--	--	--	--	--	--	--	--	--	--	--	--	--	--	--	--	--	--	--	--	--	--	--	--	--	--	--	--	--	--	--	--	--	--	--	--	--	--	--	--	--	--	--	--	--	--	--	--	--	--	--	--	--	--	--	--	--	--	--	--	--	--	--	--	--	--	--	--	--	--	--	--	--	--	--	--	--	--	--	--	--	--	--	--	--	--	--	--	--	--	--	--	--	--	--	--	--	--	--	--	--	--	--	--	--	--	--	--	--	--	--	--	--	--	--	--	--	--	--	--	--	--	--	--	--	--	--	--	--	--	--	--	--	--	--	--	--	--	--	--	--	--	--	--	--	--	--	--	--	--	--	--	--	--	--	--	--	--	--	--	--	--	--	--	--	--	--	--	--	--	--	--	--	--	--	--	--	--	--	--	--	--	--	--	--	--	--	--	--	--	--	--	--	--	--	--	--	--	--	--	--	--	--	--	--	--	--	--	--	--	--	--	--	--	--	--	--	--	--	--	--	--	--	--	--	--	--	--	--	--	--	--	--	--	--	--	--	--	--	--	--	--	--	--	--	--	--	--	--	--	--	--	--	--	--	--	--	--	--	--	--	--	--	--	--	--	--	--	--	--	--	--	--	--	--	--	--	--	--	--	--	--	--	--	--	--	--	--	--	--	--	--	--	--	--	--	--	--	--	--	--	--	--	--	--	--	--	--	--	--	--	--	--	--	--	--	--	--	--	--	--	--	--	--	--	--	--	--	--	--	--	--	--	--	--	--	--	--	--	--	--	--	--	--	--	--	--	--	--	--	--	--	--	--	--	--	--	--	--	--	--	--	--	--	--	--	--	--	--	--	--	--	--	--	--	--	--	--	--	--	--	--	--	--	--	--	--	--	--	--	--	--	--	--	--	--	--	--	--	--	--	--	--	--	--	--	--	--	--	--	--	--	--	--	--	--	--	--	--	--	--	--	--	--	--	--	--	--	--	--	--	--	--	--	--	--	--	--	--	--	--	--	--	--	--	--	--	--	--	--	--	--	--	--	--	--	--	--	--	--	--	--	--	--	--	--	--	--	--	--	--	--	--	--	--	--	--	--	--	--	--	--	--	--	--	--	--	--	--	--	--	--	--	--	--	--	--	--	--	--	--	--	--	--	--	--	--	--	--	--	--	--	--	--	--	--	--	--	--	--	--	--	--	--	--	--	--	--	--	--	--	--	--	--	--	--	--	--	--	--	--	--	--	--	--	--	--	--	--	--	--	--	--	--	--	--	--	--	--	--	--	--	--	--	--	--	--	--	--	--	--	--	--	--	--	--	--	--	--	--	--	--	--	--	--	--	--	--	--	--	--	--	--	--	--	--	--	--	--	--	--	--	--	--	--	--	--	--	--	--	--	--	--	--	--	--	--	--	--	--	--	--	--	--	--	--	--	--	--	--	--	--	--	--	--	--	--	--	--	--	--	--	--	--	--	--	--	--	--	--	--	--	--	--	--	--	--	--	--	--	--	--	--	--	--	--	--	--	--	--	--	--	--	--	--	--	--	--	--	--	--	--	--	--	--	--	--	--	--	--	--	--	--	--	--	--	--	--	--	--	--	--	--	--	--	--	--	--	--	--	--	--	--	--	--	--	--	--	--	--	--	--	--	--	--	--	--	--	--	--	--	--	--	--	--	--	--	--	--	--	--	--	--	--	--	--	--	--	--	--	--	--	--	--	--	--	--	--	--	--	--	--	--	--	--	--	--	--	--	--	--	--	--	--	--	--	--	--	--	--	--	--	--	--	--	--	--	--	--	--	--	--	--	--	--	--	--	--	--	--	--	--	--	--	--	--	--	--	--	--	--	--	--	--	--	--	--	--	--	--	--	--	--	--	--	--	--	--	--	--	--	--	--	--	--	--	--	--	--	--	--	--	--	--	--	--	--	--	--	--	--	--	--	--	--	--	--	--	--	--	--	--	--	--	--	--	--	--	--	--	--	--	--	--	--	--	--	--	--	--	--	--	--	--	--	--	--	--	--	--	--	--	--	--	--	--	--	--	--	--	--	--	--	--	--	--	--	--	--	--	--	--	--	--	--	--	--	--	--	--	--	--	--	--



1 EXISTING FACTORY GROUND FLOOR PLAN - UNIT 2 AND 3  
1 : 100

ISSUED FOR S4.55

REV	DATE	DESCRIPTION	BY
A	01.06.2022	ISSUED FOR S4.55	MT

**COPYRIGHT**  
All rights reserved.  
These drawings, plans and specifications  
and the copyright are the property of  
Nemco Design and must not be used,  
reproduced or copied wholly or in part  
without the written permission of Nemco  
Design.

**NEMCO DESIGN**  
PTY LTD  
STRUCTURAL ENGINEERING  
& ARCHITECTURAL DESIGN

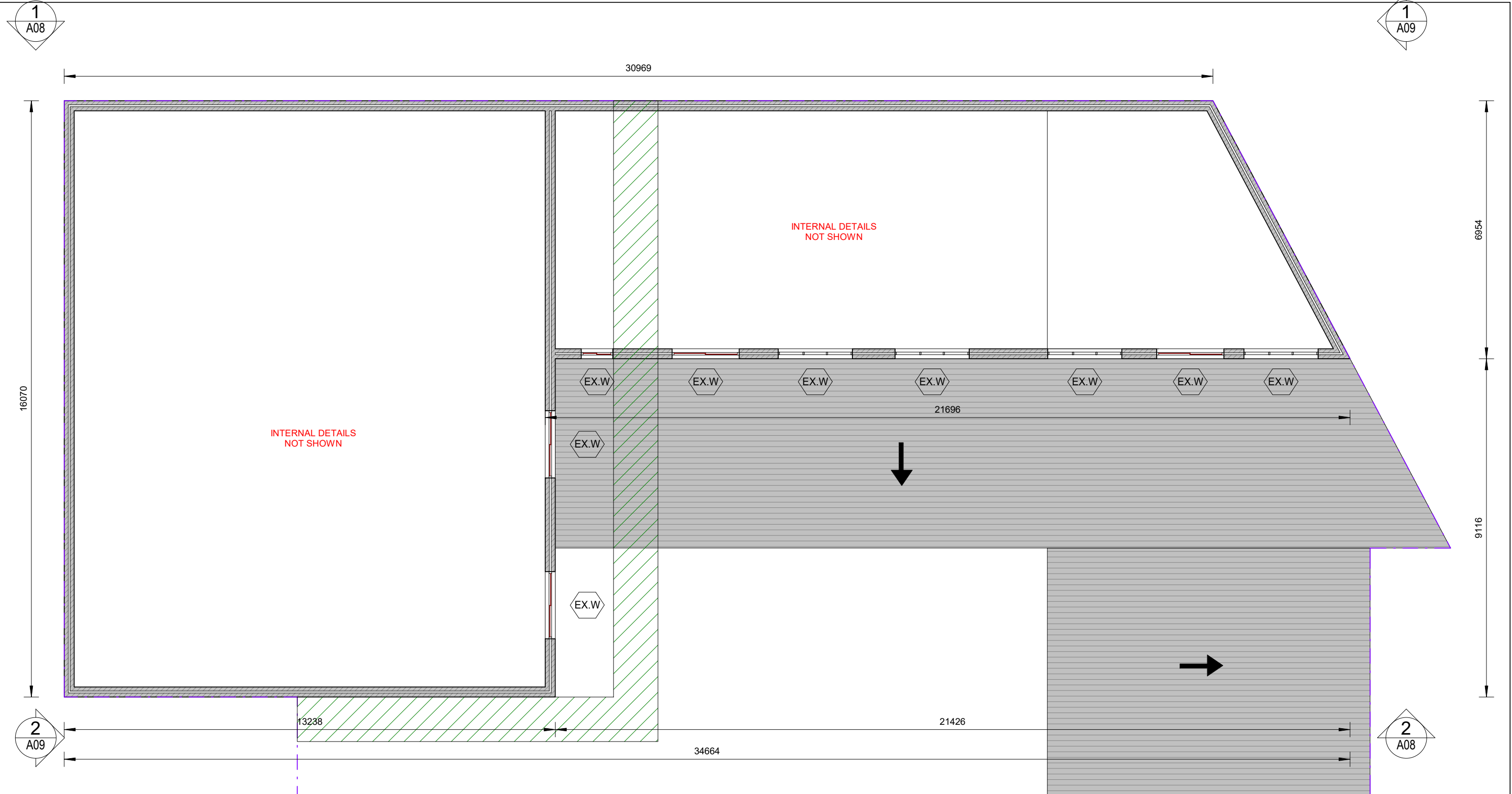
ADDRESS:  
SUITE 4, LEVEL 1,  
402-410 CHAPEL RD, BANKSTOWN,  
NSW 2200  
P: 9709 5556 M: 0422 606 228  
E: abraham@nemcodesign.com.au

**PROPOSED S4.55 TO EXISTING APPROVED  
(DA-269/2015)**  
Unit 4 106-110 BENAROON RD, LAKEMBA  
LOT 103, DP 814348

**EXISTING FACTORY GROUND FLOOR PLAN - UNIT 3 & 4**

JOB NUMBER: <b>22796</b>	DWG NUMBER: <b>A03</b>	ORIGINAL SIZE: A3
DESIGNED BY: A.N.	DATE: <b>01.12.2022</b>	
DRAWN BY: A.N.	SCALE: AS SHOWN	

5/12/2022 5:03:05 PM

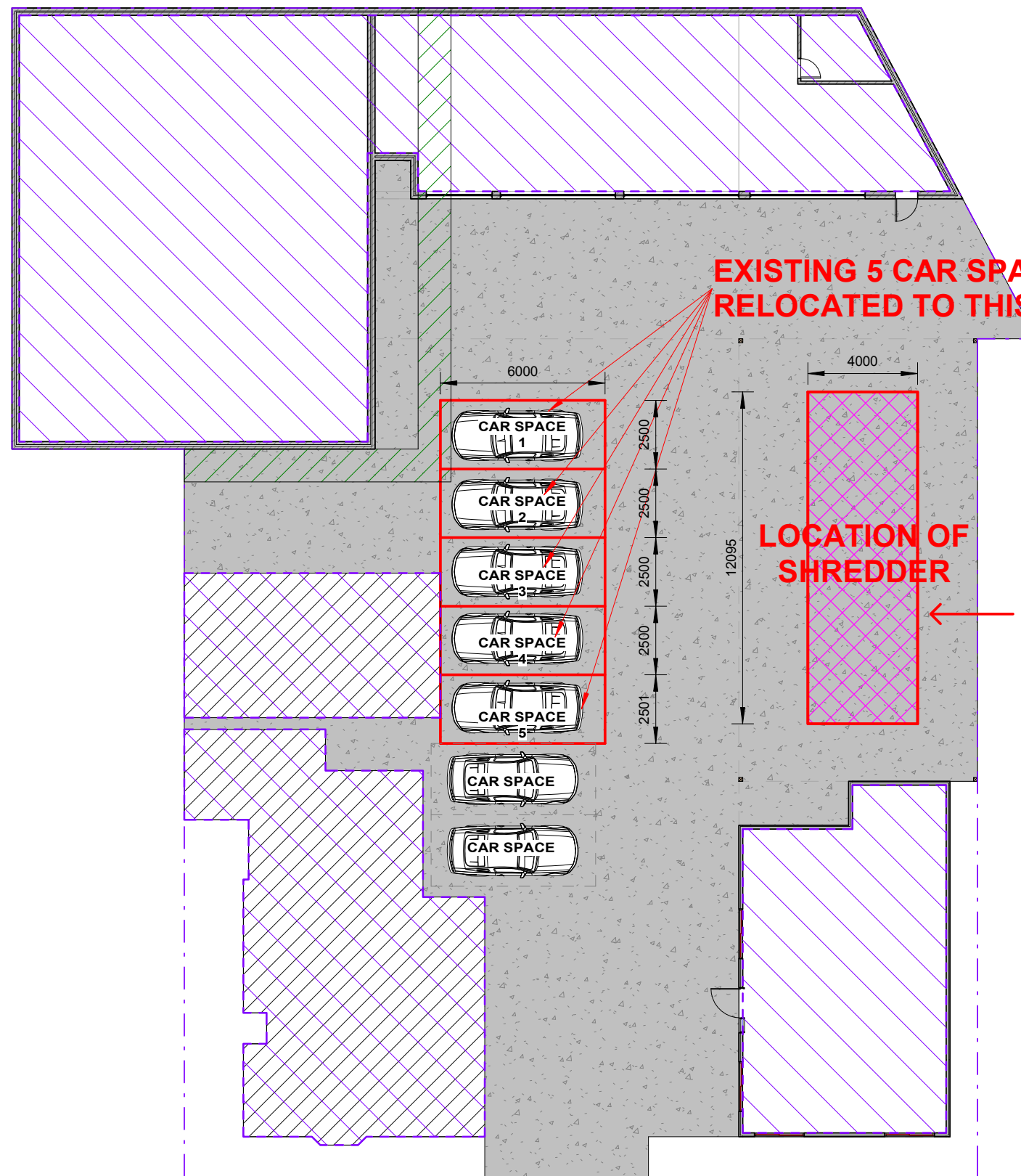


1 EXISTING FACTORY MEZZANINE FLOOR PLAN  
1 : 100

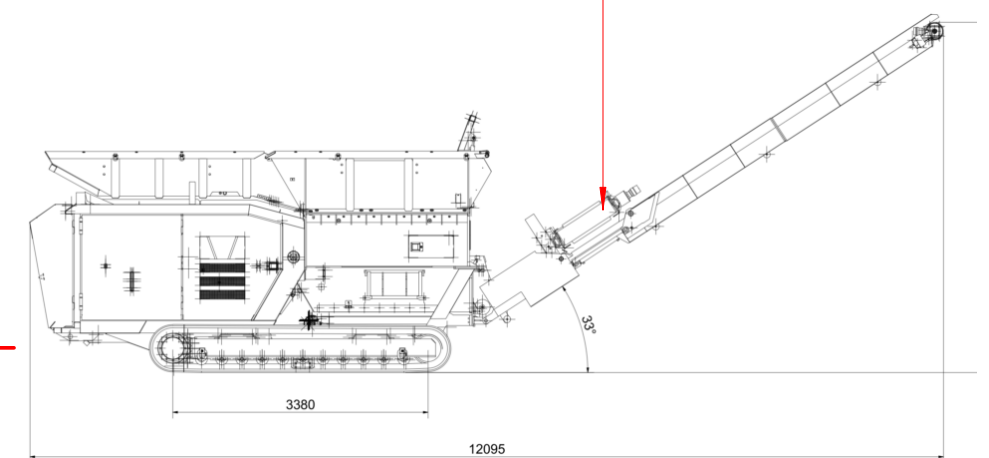
ISSUED FOR S4.55

<table><tr><td> </td><td> </td><td> </td></tr><tr><td> </td><td> </td><td> </td></tr><tr><td> </td><td> </td><td> </td></tr><tr><td> </td><td> </td><td> </td></tr><tr><td>A</td><td>01.06.2022</td><td>ISSUED FOR S4.55</td></tr><tr><td>REV</td><td>DATE</td><td>DESCRIPTION</td></tr></table>															A	01.06.2022	ISSUED FOR S4.55	REV	DATE	DESCRIPTION	<p><b>COPYRIGHT</b> All rights reserved. These drawings, plans and specifications and the copyright are the property of Nemco Design and must not be used, reproduced or copied wholly or in part without the written permission of Nemco Design.</p> <p><b>NEMCO DESIGN</b> PTY LTD</p> <p>STRUCTURAL ENGINEERING &amp; ARCHITECTURAL DESIGN</p>	<p>ADDRESS: SUITE 4, LEVEL 1, 402-410 CHAPEL RD, BANKSTOWN, NSW 2200 P: 9709 5556 M: 0422 606 228 E: abraham@nemcodesign.com.au</p> <p><b>PROPOSED S4.55 TO EXISTING APPROVED (DA-269/2015)</b> <b>Unit 4 106-110 BENAROON RD, LAKEMBA</b> <b>LOT 103, DP 814348</b></p> <p><b>EXISTING FACTORY MEZZANINE FLOOR PLAN - UNIT 2 &amp; 3</b></p>	<table><tr><td>JOB NUMBER: <b>22796</b></td><td>DWG NUMBER: <b>A04</b></td><td>ORIGINAL SIZE: A3</td></tr><tr><td>DESIGNED BY: A.N.</td><td>DATE: <b>01.12.2022</b></td><td rowspan="2"></td></tr><tr><td>DRAWN BY: A.N.</td><td>SCALE: AS SHOWN</td></tr></table>	JOB NUMBER: <b>22796</b>	DWG NUMBER: <b>A04</b>	ORIGINAL SIZE: A3	DESIGNED BY: A.N.	DATE: <b>01.12.2022</b>		DRAWN BY: A.N.	SCALE: AS SHOWN
A	01.06.2022	ISSUED FOR S4.55																													
REV	DATE	DESCRIPTION																													
JOB NUMBER: <b>22796</b>	DWG NUMBER: <b>A04</b>	ORIGINAL SIZE: A3																													
DESIGNED BY: A.N.	DATE: <b>01.12.2022</b>																														
DRAWN BY: A.N.	SCALE: AS SHOWN																														

5/12/2022 5:03:05 PM



**PROPOSED HAMMEL PRIMARY SHREDDER IS A PORTABLE MACHINE AND CAN BE RELOCATED**



**PROPOSED HAMMEL PRIMARY SHREDDER VB 750 FOR SHREDDING MATTRESSES**

**DETAIL @1:100 SCALE**

**1 PROPOSED SITE FLOOR PLAN**  
1 : 200

- S** SMOKE ALARM SYSTEM
- MV** MECHANICAL VENTILATION
- EXISTING FLOOR TO REMAIN**
- EXISTING INTERNAL WALLS TO REMAIN**
- EXISTING EXTERNAL WALLS**

**ISSUED FOR S4.55**

REV	DATE	DESCRIPTION	BY
A	01.06.2022	ISSUED FOR S4.55	MT

**COPYRIGHT**  
All rights reserved.  
These drawings, plans and specifications and the copyright are the property of Nemco Design and must not be used, reproduced or copied wholly or in part without the written permission of Nemco Design.

**NEMCO DESIGN**  
PTY LTD  
ADDRESS:  
SUITE 4, LEVEL 1,  
402-410 CHAPEL RD, BANKSTOWN,  
NSW 2200  
P: 9709 5556 M: 0422 606 228  
E: abraham@nemcodesign.com.au  
**STRUCTURAL ENGINEERING  
& ARCHITECTURAL DESIGN**

**PROPOSED S4.55 TO EXISTING APPROVED (DA-269/2015)**  
**Unit 4 106-110 BENAROON RD, LAKEMBA**  
**LOT 103, DP 814348**  
**PROPOSED SITE FLOOR PLAN**

JOB NUMBER: <b>22796</b>	DWG NUMBER: <b>A05</b>	ORIGINAL SIZE: A3
DESIGNED BY: A.N.	DATE: <b>01.12.2022</b>	
DRAWN BY: A.N.	SCALE: AS SHOWN	

5/12/2022 5:03:07 PM



HAMMEL zentral in Europa  
HAMMEL central in Europe

Lassen Sie sich diese einmalige Chance nicht entgehen und vereinbaren Sie noch heute einen unverbindlichen Vorführtermin. Ihr **HAMMEL** Team freut sich darauf, Sie betreuen zu dürfen.



LIMITED EDITION  
with CAT C13 inside

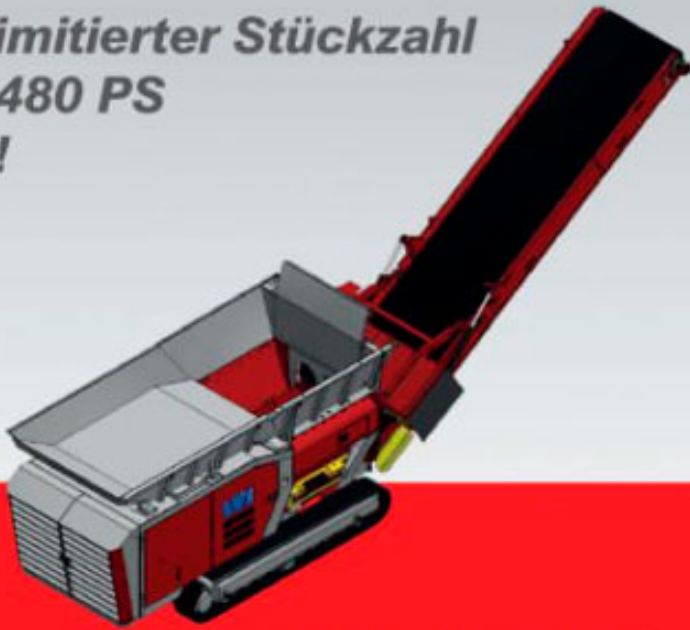


Vorbrecher / Primary Shredder  
HAMMEL 750 DK



special  
Bauma  
2013 EDITION

HAMMEL 750 DK in limitierter Stückzahl  
mit herausragenden 480 PS  
powered by **CAT** C13 !



HAMMEL  
Recyclingtechnik GmbH  
Leimbacher Strasse 103  
D-36433 Bad Salzungen  
Phone: +49 (0) 36 95/69 91-0  
Fax: +49 (0) 36 95/69 91-93  
Internet: www.hammel.de



www.hammel.de ISSUED FOR S4.55

REV	DATE	DESCRIPTION	BY
A	01.06.2022	ISSUED FOR S4.55	MT

COPYRIGHT  
All rights reserved.  
These drawings, plans and specifications  
and the copyright are the property of  
Nemco Design and must not be used,  
reproduced or copied wholly or in part  
without the written permission of Nemco  
Design.

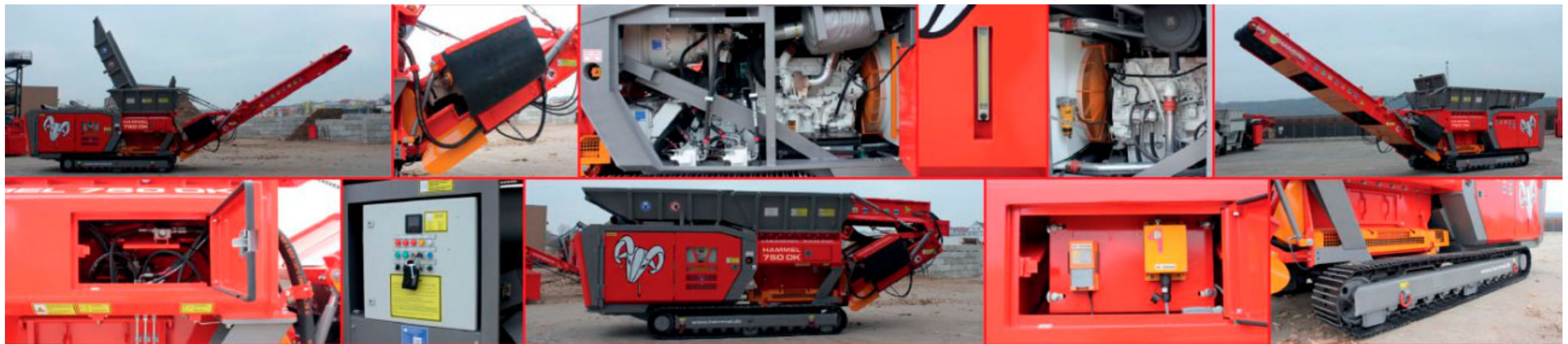
NEMCO DESIGN  
PTY LTD

ADDRESS:  
SUITE 4, LEVEL 1,  
402-410 CHAPEL RD, BANKSTOWN,  
NSW 2200  
P: 9709 5555 M: 0422 606 228  
E: abraham@nemcodesign.com.au

STRUCTURAL ENGINEERING  
& ARCHITECTURAL DESIGN

PROPOSED S4.55 TO EXISTING APPROVED  
(DA-269/2015)  
Unit 4 106-110 BENAROON RD, LAKEMBA  
LOT 103, DP 814348  
TECHNICAL SPECIFICATION PLAN

JOB NUMBER: 22796	DWG NUMBER: A06	ORIGINAL SIZE: A3
DESIGNED BY: A.N.	DATE: 01.12.2022	
DRAWN BY: A.N.	SCALE: AS SHOWN	



## HAMMEL 750 DK

### Arbeitsstellung / working position

#### Einsatzgebiete:

- Alt- und Mischholz
- Grünschnitt
- Wurzelstöcke
- Paletten
- Hausmüll
- Industrie- und Gewerbemüll
- Aluminiumprofile und -blöcke
- Leichter Mischschrott

#### Technische Daten\*:

- Antrieb: **CAT C13, 480 PS**
- Motordrehzahl: 1.800 U/min
- Wellengeschwindigkeit: 12 - 39 U/min
- Drehmoment: max. 240.000 Nm
- Bandgeschwindigkeit: 1,6 m/s
- Abwurfhöhe bei 33°: 4.660 mm
- Gewicht: 20,8 t ohne Magnet  
22,5 t mit Magnet

#### Funktionsprinzip:

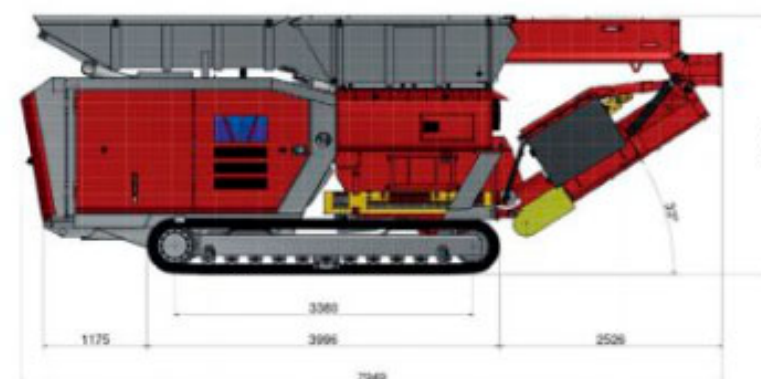
- Speziell ineinandergreifende Werkzeugwellen
- Werkzeugwellen ziehen das Material direkt ein und zerkleinern es
- Magnetabscheidung mittels Überbandmagnet

#### Vorteile:

- erhöhte Leistung für mehr Durchsatz
- niedriger Energieverbrauch
- sehr wartungsfreundlich
- bedienerfreundliches Handling durch IFM Steuerung
- bessere Zugänglichkeit der Bedienfelder
- geringe Geräuscentwicklung
- Kipptrichter mit erhöhter Neigung für optimalen Materialfluss
- mobil auf Kette erhältlich oder semi-mobil auf Hakenlift



### Transportstellung / transport position



## HAMMEL 750 DK



#### application:

- waste and mixed wood
- green waste
- root stocks
- pallets
- domestic waste
- industrial and commercial waste
- aluminum (profiles & blocks)
- light mixed scrap

#### technical data\*:

- drive: **CAT C13, 480 hp**
- engine speed: 1.800 rpm
- shaft speed: 12 - 39 rpm
- torque: max. 240.000 Nm
- discharge belt speed: 1,6 m/s
- discharge height at 33°: 4.660 mm
- weight: 20,8 t without magnet  
22,5 t with magnet

#### functional principle:

- special intertwining shafts
- material is directly drawn in and shredded by the shafts
- magnetic separation by means of an over belt magnet

#### advantages:

- higher performance for higher throughput
- low energy consumption
- easy to maintain
- user friendly handling with IFM control
- improved accessibility of control panels
- low noise emission
- tilting hopper with an increased angle for optimal material flow
- available as mobile version on tracks or as semi-mobile version on hook lift

**ISSUED FOR S4.55**

REV	DATE	DESCRIPTION	BY
A	01.06.2022	ISSUED FOR S4.55	MT

**COPYRIGHT**  
All rights reserved.  
These drawings, plans and specifications  
and the copyright are the property of  
Nemco Design and must not be used,  
reproduced or copied wholly or in part  
without the written permission of Nemco  
Design.

**NEMCO DESIGN**  
PTY LTD  
ADDRESS:  
SUITE 4, LEVEL 1,  
402-410 CHAPEL RD, BANKSTOWN,  
NSW 2200  
P: 9709 5555 M: 0422 606 228  
E: abraham@nemcodesign.com.au  
**STRUCTURAL ENGINEERING  
& ARCHITECTURAL DESIGN**

**PROPOSED S4.55 TO EXISTING APPROVED  
(DA-269/2015)**  
Unit 4 106-110 BENAROON RD, LAKEMBA  
LOT 103, DP 814348  
**TECHNICAL SPECIFICATION PLAN**

JOB NUMBER: <b>22796</b>	DWG NUMBER: <b>A07</b>	ORIGINAL SIZE: A3
DESIGNED BY: A.N.	DATE: <b>01.12.2022</b>	
DRAWN BY: A.N.	SCALE: AS SHOWN	

5/12/2022 5:03:08 PM